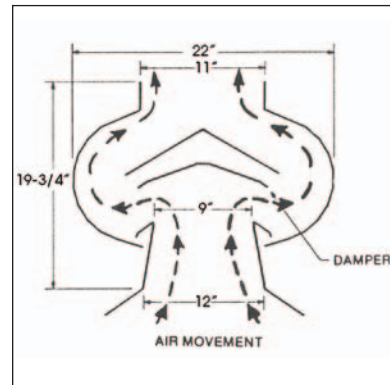
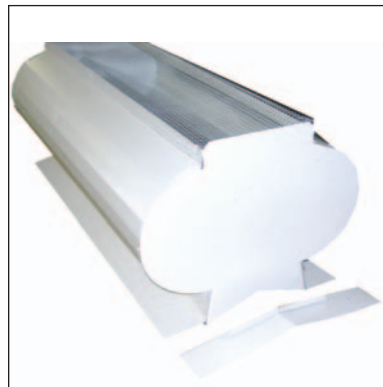




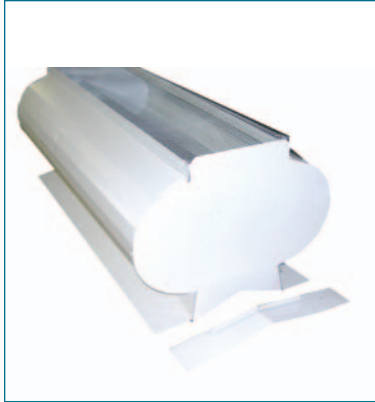
CONFINEMENT RIDGE VENTS

CannonBall:HNP Confinement Ridge Vents are fully pre-assembled with flanges, end caps, and bird screens. Made from heavy duty steel, our Confinement series of vents are designed to provide the maximum amount of airflow at an affordable price. All Confinement Ridge Vents are available with optional dampers for manual airflow control. Ideal for all types of animal confinement structures and all other structures with unfinished interiors where maximum airflow is required.

| Model 1080 |



Manufactured of 26 ga. pre-painted steel available in white, cocoa brown, or galvanized. The Model 1080 features a 9" throat for maximum airflow. Units come pre-assembled and include flashings. Internal rain diverter keeps rain outside the building and built-in screens protect against bird intrusion. The Model 1080 can be ordered in 4' or 10' lengths.



MODEL 1080

Free Air Space	432/1080 sq. in.
Available Lengths	4'/10'
Overall Width	22"
Roof Height	19-3/4"
Shipping Weight	45 lbs./95 lbs.
Throat Opening	9"
Special Colors	White, Brown, Galv.



555 Lawton Avenue, P.O. Box 835 | Beloit, Wisconsin 53512-0835
p. 608.365.2161 | f. 608.365.4565 | Toll Free. 800.766.2825 | www.cnbhnp.com