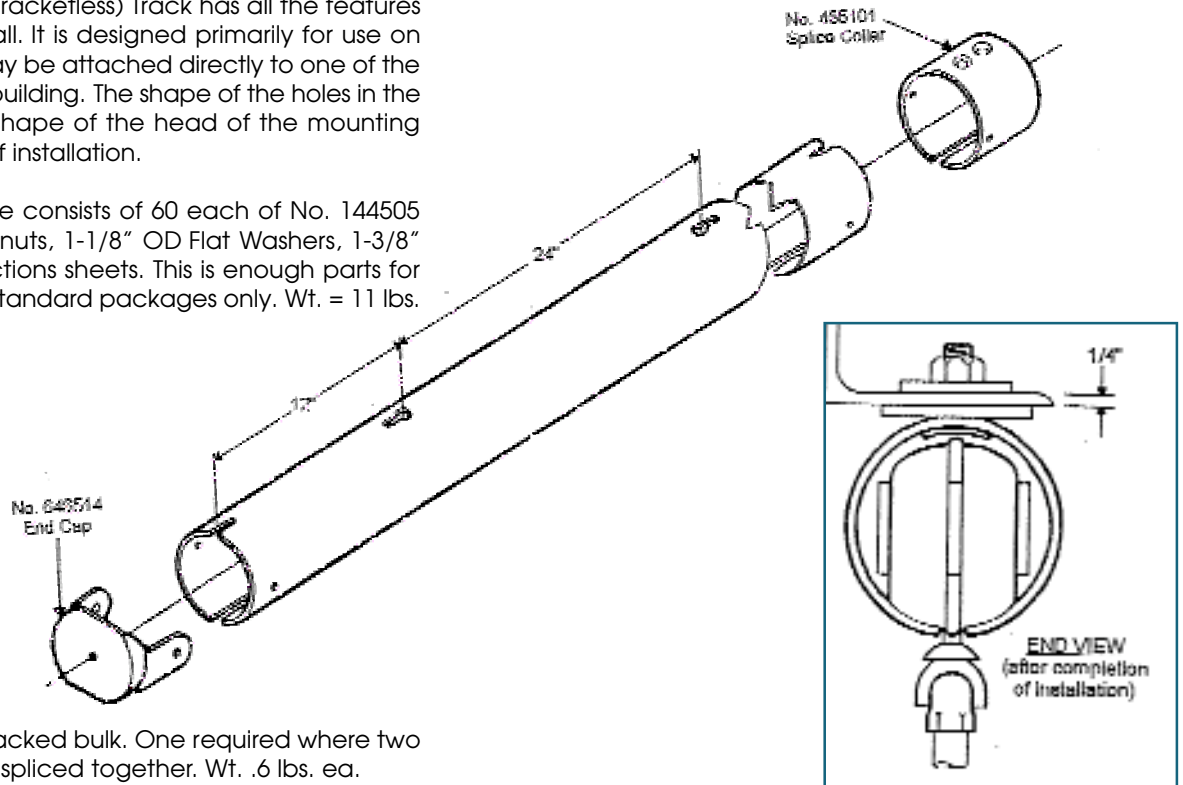




# BOLT HUNG (BRACKETLESS) TRACK INSTALLATION INSTRUCTIONS

A. CannonBall Bolt Hung (Bracketless) Track has all the features of bracket type CannonBall. It is designed primarily for use on metal buildings where it may be attached directly to one of the structural members of the building. The shape of the top of the track and the shape of the head of the mounting bolts permit easy, foolproof installation.

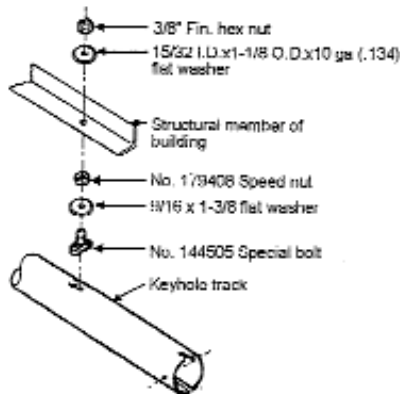
B. No. 643840 Bolt Package consists of 60 each of No. 144505 Special 1" long bolts, hex nuts, 1-1/8" OD Flat Washers, 1-3/8" OD flat washers & 4 instructions sheets. This is enough parts for 120 feet of track. Order in standard packages only. Wt. = 11 lbs.



No. 465101 Splice Collar, packed bulk. One required where two sections of track are to be spliced together. Wt. .6 lbs. ea.

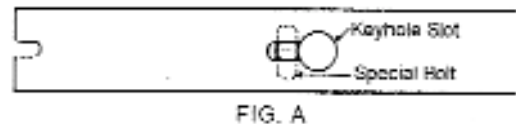
No. 646514 End Cap, packed bulk. Wt. .3 lbs. ea.

C. Provide mounting holes spaced 24 inches on center in the structural member of the building. These mounting holes must provide for the 3/8" bolts and thus must be at least 25/64 inches in diameter. However, the use of the large flat washers on either side of the mounting member will permit making the mounting holes oversize. This will compensate somewhat for any errors in hole spacing. The holes must not exceed 5/8" in diameter.



D. Note that the mounting member should not exceed 1/4" in thickness in order to permit full engagement of the threads of the bolts.

E. Insert special bolt into slot of Keyhole Track. Adjust bolt so that radius of special bolt head matches that of the track. The notch in the end of the bolt will be in line with the track when the bolt is properly adjusted. Apply 9/16 x 1-3/8 flat washer onto special bolt. Secure special bolt and washer to Keyhole Track with speed nut, (finger tight) making sure that the square neck of special bolt is properly seated in slot (Figure A).



Apply special bolts and washers secured with speed nut to remaining slots of Keyhole Track section. With pre-drilled holes in structural member, mount Keyhole Track section.