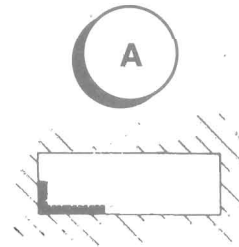


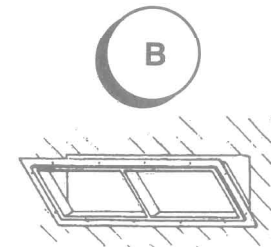


INSTALLATION INSTRUCTIONS

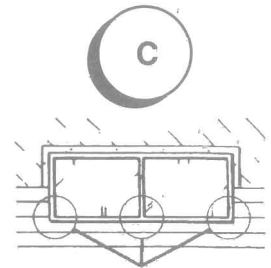
YOU HAVE JUST PURCHASED ONE OF THE FINEST WINDOWS
THAT MONEY CAN BUY.
IT WILL ONLY COMPLETE ITS FUNCTION IF IT IS INSTALLED PROPERLY.



Check Rough opening for
correct size level square



Check for dipping and
bowing and proper room
has been allowed around
window



Shim Mullion or meet rails
and corners

1. Check rough opening for correct size, level and square. (Diagram A)
2. Close and lock all sash's before setting in opening.
3. Set window in opening, adequate room must be allowed for insulating the sill. Center window in opening (equal spacing top, bottom and sides) level and tack both bottom corners. Make sure all jambs are square and plumb before nailing. (Diagram B)
4. Shim side jambs so they are straight, check by measuring distance between jambs, center measurement should be same on both ends width and height.
5. Shim and block interior sill and jam at bottom corners, and at any mullion or meeting rail. (Diagram C)
6. Check to assure proper room has been allowed to insulate around the window's sill, jamb and head. Lightly pack insulation around the cavity. It should be filled completely to the outer nailing fin.
7. Siding should be kept $\frac{1}{4}$ inch from the heads, sill and jambs allowing expansion between siding and window.