



**POWDER
COATED STEEL**

DUTCH DOORS



BARN DOORS

LOFT DOORS

COUNTRY SLIDERS



steel doors and sliders

2500 SERIES STEEL DUTCH DOORS



Available Models:

2500 Series -Standard Dutch Door, with frame. This classic design features two cross-buck panels hinged individually in a steel frame.

2520 Series - Dutch Door with window lite and frame. This unique design replaces the upper cross-buck panel with a panel featuring a white framed window lite with white internal grids.

2530 Series - Standard Dutch Door, no frame. The classic Dutch Door designed to be mounted directly to the wood framing of the barn.

2540 Series - Dutch Door with window lite, no frame. Our new Dutch Door with window lite for use in a wood frame.

Available Configurations:

Standard- 4/0 x 7/0 with two equal size panels. The most common configuration of Dutch Door on the market, the 4/0 x 7/0 is suitable for most applications.

Thoroughbred - 4/0 x 8/0 with two equal size panels. Designed for barnhousing larger horses, the 4/0 x 8/0 provides greater head room for passage through the entryway and a slightly larger lower panel.

Offset - 4/0 x 7/0 with 1/3 height top panel and 2/3 height bottom panel. For the ultimate in equine safety, our Offset Dutch Door features a taller lower panel to prevent the horse from trying to climb through a partially opened door.

1/2 Dutch (Bale) - 4/0 x 3/6 or 4/0 x 4/0 Single panel. Ideal for use as a bale door or as a horse window, the 1/2 Dutch is available with a cross-buck or a window lite and is fully operable.

2500 SERIES STEEL DUTCH DOORS



Panels constructed of heavy duty 18ga. galvaneal steel with full perimeter frame and crossbucks. Steel and hardware are powder-coated to match the colors of your building. A wide variety of colors are available. Also available in our exclusive HammerTone Powder Coating finishes for greater resistance to wear and tear.

The core of the door panels is 5/8" OSB laminated on both sides with a pre-colored 29ga. steel sheet inset. Steel insets are available in a wide variety of colors. When ordering, first color specified refers to the frame and crossbucks, the second color refers to the inset.

The frame of the door features heavy duty 14ga. galvaneal steel jambs and a 16ga. galvaneal steel header. When a frame is specified, the color and coating of the frame will match the coating used for the perimeter and crossbucks of the panels.

Steel Dutch Doors come with all necessary hardware for installation and operation of the door. A hidden finger catch is used on the upper panel and is accessible for the interior as well as the exterior of the door. A sliding bolt latch is used on the lower panel for maximum security when the top half is opened.

Window lites are fabricated with two 3/16" safety glass panes and include grids between the panes. While designed for safety, these glass units are easily replaceable in the field should they be broken. Protective grilles and gate doors are also available if desired - call factory for details.



2600 SERIES BARN DOORS

Hinged Models



Available Models:

2600 Series - Standard Hinged Barn Door, with frame. This classic design features solid door panels with crossbucks in upper and lower halves of the panel, hinged in a steel frame.

2620 Series - Hinged Barn Door with window lite and frame. A solid panel design that replaces the upper crossbuck of the panel with a white framed safety glass window lite with white internal grids.

The look and feel of our Steel Dutch Door in a solid door panel design. This unit is available in single and double door configurations for openings up to 8/0 x 8/0. Barn Doors from CannonBall:HNP can also be set up with a Carriage House Prep featuring large, heavy duty ornamental strap hinges and arch inserts for the window lites.

Panels are constructed of heavy duty 18ga. galvaneal steel with full perimeter frame and crossbucks. Steel and hardware are powder-coated to match the colors of your building. A wide variety of colors are available. Also available in our exclusive HammerTone Powder Coating finishes for greater resistance to wear and tear. Window lites are available to replace the upper crossbuck in the door panel.

The core of the door panels is 5/8" OSB laminated on both sides with a pre-colored 29ga. steel sheet inset. Steel insets are available in a wide variety of colors. When ordering, first color specified refers to the frame and crossbucks, the second color refers to the inset.

The frame of the door features heavy duty 14ga. galvaneal steel jambs and a 16ga. galvaneal steel header. When a frame is specified, the color and coating of the frame will match the coating used for the perimeter and crossbucks of the panels. Barn doors are equipped standard with a D-handle swinging door latch or optional locksets - call factory for details.

2600 SERIES BARN DOORS

Sliding Models



Available Models:

2630 Series - Standard Sliding Barn Door. The look and feel of our Steel Dutch Door in a sliding door design.

2640 Series- Sliding Barn Door with Window Lite. Our solid panel Sliding Barn Door with a safety glass Window Lite in the upper half of the panel.

The same heavy duty construction and options of our Hinged Barn Door in a sliding door configuration. Available in single leaf doors up to 4/0 x 8/0 and double leaf doors up to 8/0 x 8/0. Also available with Carriage House Prep. Units include an integral formed bottom rail for use with stay rollers and double doors include an integral center H-channel. All Sliding Barn Doors include stay rollers, trolleys, pulls, stops and barrel bolts necessary for hanging and operating the door (Track not included).

Panels constructed of heavy duty 18ga. galvaneal steel with full perimeter frame and crossbucks. Steel and hardware are powder-coated to match the colors of your building. A wide variety of colors are available. Also available in our exclusive HammerTone Powder Coating finishes for greater resistance to wear and tear.

The core of the door panels is 5/8" OSB laminated on both sides with a pre-colored 29ga. steel sheet inset. Steel insets are available in a wide variety of colors. When ordering, first color specified refers to the frame and crossbucks, the second color refers to the inset.

LOFT DOORS

Hinged Models



Available Models:

2650 Series - Standard Hinged Loft Door, with frame. Classic style solid door panels with crossbucks in upper and lower halves of the panel, hinged in a full perimeter steel frame for above-grade applications.

2660 Series - Hinged Loft Door with window lite and frame. A solid panel design that replaces the upper crossbuck of the panel with a white framed safety glass window lite with white internal grids.

The look and feel of our Steel Dutch Door in a loft door configuration for above-grade applications. This unit is available in single and double door configurations for openings up to 8/0 x 8/0. Also available in the popular 4/0 x 6/0 size commonly used for loft doors. Upper crossbuck can be replaced with a white framed safety pane window lite with internal white grids.

Panels are constructed of heavy duty 18ga. galvaneal steel with full perimeter frame and crossbucks. Steel and hardware are powder-coated to match the colors of your building. A wide variety of colors are available. Also available in our exclusive HammerTone Powder Coating finishes for greater resistance to wear and tear. Window lites are available to replace the upper crossbuck in the door panel.

The core of the door panels is 5/8" OSB laminated on both sides with a pre-colored 29ga. steel sheet inset. Steel insets are available in a wide variety of colors. When ordering, first color specified refers to the frame and crossbucks, the second color refers to the inset.

The frame of the door features heavy duty 14ga. galvaneal steel jambs and a 16ga. galvaneal steel header. When a frame is specified, the color and coating of the frame will match the coating used for the perimeter and crossbucks of the panels. The frame is a full perimeter design for use on above grade applications.

LOFT DOORS

Sliding Models



Available Models:

2670 Series -Standard Sliding Loft Door. Classic style solid door panels with crossbucks in upper and lower halves of the panel configured for sliding applications.

2680 Series -Sliding Loft Door with Window Lite. A solid panel design that replaces the upper crossbuck of the panel with a white framed safety glass window lite with white internal grids.

The same heavy duty construction and options of our Hinged Loft Door in a sliding door configuration. Available in single leaf doors up to 4/0 x 8/0 and double leaf doors up to 8/0 x 8/0. Also available in the popular 4/0 x 6/0 size commonly used for loft doors. Upper crossbuck can be replaced with a white framed safety pane window lite with internal white grids.

Units include an integral formed bottom rail for use with stay rollers and double doors include an integral center H-channel. All Sliding Loft Doors include stay rollers, trolleys, pulls, stops and barrel bolts necessary for hanging and operating the door (Track not included).

Panels constructed of heavy duty 18ga. galvaneal steel with full perimeter frame and crossbucks. Steel and hardware are powder-coated to match the colors of your building. A wide variety of colors are available. Also available in our exclusive HammerTone Powder Coating finishes for greater resistance to wear and tear.

The core of the door panels is 5/8" OSB laminated on both sides with a pre-colored 29ga. steel sheet inset. Steel insets are available in a wide variety of colors. When ordering, first color specified refers to the frame and crossbucks, the second color refers to the inset.

2700 SERIES STEEL COUNTRY SLIDERS



Available Models:

2700 Series - Standard Country Slider. The look and feel of a Dutch Door with upper and lower crossbucks for large, sliding door openings.

2720 Series - Country Slider with Window Lite. Our Country Slider design with a white framed safety glass window lite with white internal grids replacing the upper crossbucks.

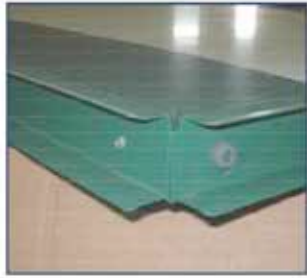
A large slider design available in sizes up to 12' x 12' for single leaf and 16' x 12' for double leaf doors. Similar in appearance to our Steel Dutch Doors, the Steel Country Slider is a unique new design available assembled or knocked down (units with lites are KD less glass). Units include an integral formed bottom rail for use with stay rollers and double doors include an integral center H-channel. All Steel Country Sliders include stay rollers, trolleys, pulls, stops and barrel bolts necessary for hanging and operating the door (Track not included).

Steel Country Sliders feature an insulated panel design fabricated from heavy duty 16ga. galvaneal steel with full perimeter edging and crossbucks. Steel and hardware are powder-coated to match the colors of your building. A wide variety of colors are available. Also available in our exclusive HammerTone Powder Coating finishes for greater resistance to wear and tear.

The core of the door panels is a 1-5/8" thick polyurethane foamed-in-place insert laminated on both sides with a pre-colored 29ga. steel sheet inset. The insulated panel provides a significant reduction in energy loss for temperature controlled buildings with the additional benefits of greater strength and corrosion resistance compared to wood. Steel insets are available in a wide variety of colors. When ordering, first color specified refers to the edging and crossbucks, the second color refers to the inset.

When ordered as a knocked down unit, the Steel Country Slider represents one of the easiest sliding door kits to assemble on the market today. Personnel with limited training can typically assemble our KD Country Slider kits in about 30 to 45 minutes. The KD Country Slider also allows for easy shipment of even the largest sliders to anywhere in the U.S. or Canada using standard freight methods. For KD Country Sliders with Window Lites, glazing can be procured local to the jobsite so you never have to worry about special glass breaking during shipment.

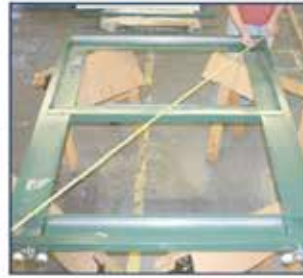
2700 SERIES STEEL COUNTRY SLIDERS



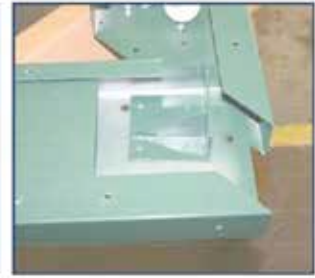
FORMED RAILS



DELRIN TROLLEY



KD ASSEMBLY



MITRED JOINTS

Formed Rails

A formed steel channel is used to conceal and engage the provided stay roller to prevent the door from swinging out or in with the wind. On double leaf units, a similar formed channel is attached to one vertical edge to interlock with the second leaf when closed. Vertical rail includes rubber bump stops to protect the leafs when closing the unit.

Delrin Trolley

Country Sliders come equipped with Delrin Round Track Trolleys from CannonBair:HNP. Compatible with all CannonBair:HNP Round Track Systems, this trolley features a lifetime warranty and provides our Country Sliders with smooth, easy operation. The pendant bolt design provides easy vertical adjustment while mounting slots integrated into the top rail provide adjustment in or out from the building.

KD Assembly

Our Country Slider KD package includes everything you need to rapidly and easily assemble your Country Slider door in the field. All components are pre-cut, pre-punched, and pre-formed so your door arrives ready to assemble. For KD units with windows, safety glass for the unit will need to be procured locally, however most glass shops will deliver and install the glazing at the jobsite if requested.

Mitred Joints

The design of our Country Slider features overlapping mitred corner joints for additional strength at the structural joints. This design provides greater fastener retention and more structural material at the assembly joints that are under the greatest load. This design means that our Country Sliders will withstand greater use, abuse, and long-term wear than similar designs using butt joint construction.



HORSE BARN COMPONENTS



Steel Horse Stalls

Constructed of powder-coated 14ga galvaneal steel, our 2800 Series Steel Horse Stalls are assembled using hidden welds for a clean, horse-safe appearance. Available with a wide variety of options, Steel Horse Stalls from CannonBair:HNP let you build custom designs at an affordable price. Available options include swingout waters and feeders, grooming stall kits, and stall doors with fixed, drop down, or yoke grill sections. Available standard in black, Steel Stalls from CannonBair:HNP can also be powder coated in a variety of colors - contact factory for details. Available in 30" and 36" grille heights.



Aluminum Horse Stalls

3100 Series Aluminum Stalls from CannonBair:HNP feature anodized aluminum coatings for the ultimate in resistance to chipping and scratching. Available in clear or black, our aluminum stalls come in knocked down kits that are easy to assemble and include most popular stall options. Most Aluminum Horse Stall components can even be shipped via UPS for rapid, affordable delivery to anywhere in the U.S. or Canada. Available in 29" and 36" grille heights.

HORSE BARN COMPONENTS



Cupolas

Add a touch of style and class to your horse barn with CB Cupolas from CannonBaii:HNP. Available assembled or knocked down with your choice of standard flashing or a universal base. our CB Cupolas are fabricated of 24ga pre-painted galvanized steel in a wide variety of colors. All CB Cupolas feature our exclusive stainless steel roof seam lock for enhanced appearance and safer installation. Roof and sides can each be of different colors and a wide variety of weathervanes are available.



Walk Doors

CannonBaii:HNP provides one of the largest selections of door models featuring six panel and crossbuck doors in the marketplace today. All of our walk door designs feature insulated panels, stainless steel hinges and are available with window lites and a wide variety of accessories. Double door and custom sized units are also available - contact factory for details.



Windows

With choices including utility aluminum, thermal broke aluminum, and welded vinyl, CannonBaii:HNP can meet all of your window needs. Our 200 Series utility model is an economical single pane horizontal slider for general purpose use. The 2000 Series aluminum model is available in horizontal sliding and picture windows featuring a 13/16" IG for energy efficiency. The 2100 Series adds our exclusive Pro Fit Trim package for color matching to your building. Our 1200 Series Builders Choice vinyl is available in slider, single hung, picture and architectural shapes including circle tops.

POWDER COATED GALVANEAL STEEL

Dutch, Barn, Loft and Country Slider Doors



Steel doors of 18ga or 16ga galvaneal steel available powder coated in a wide variety of colors including our exclusive HammerTone Powder Coating.

Models available for all types of barn door openings including hinged and sliding applications

Suitable for all types of wood and metal buildings

Fast and easy assembly and installation – all components and fasteners come finished and ready to install

Available delivered with a complete line-up of horse barn systems including Horse Stalls, Cupolas, Walk Doors, and Windows.

CANNONB..ALL

TM

CNB-SD-BK001

